



# Bristle Brushes

Cristone® Bristle Brushes use a nano structure, helping to keep its form while working, providing stable grinding performance. Its ceramic abrasive bristles provide fine surface polishing and high performance deburring of precision parts. The bristle greatly reduces process time reducing your cost and increasing production efficiency.

## — OFFERING —

CROSSHOLE BRUSH



END TYPE BRUSH



CUP TYPE BRUSH



WRITING TYPE BRUSH



### APPLICATIONS

Cross Hole Deburring  
Surface Finishing  
Polishing

### PARTS

Aircraft  
Engine Blocks  
Medical Devices

### MATERIALS

Hardened Steels  
Carbon Steels  
Prehardened Steels  
Alloy Steels  
Brass  
Aluminum Alloy



# Cristone® Bristle Brush Styles



## Writing Brush

Used to deburr ribbed or three-dimensional small parts.

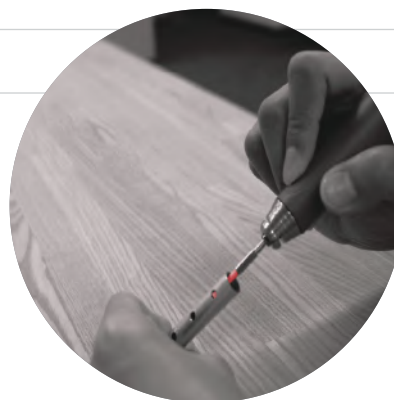
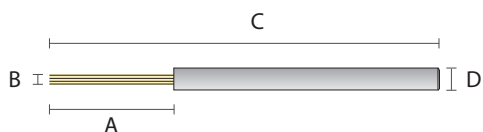


BRUSH LENGTH (A)	BRISTLE DIAMETER (B)	OVERALL LENGTH (C)	SHANK DIAMETER (D)	MAXIMUM RPM
40mm	6, 9, 16mm	120mm	5, 6, 10mm	14,000/min

## Cross Hole Brushes

### Short Stem

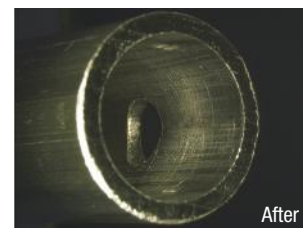
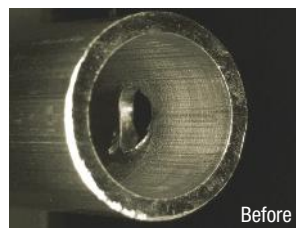
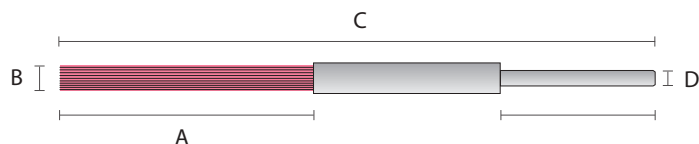
Used for polishing the interior walls of precision parts.



BRUSH LENGTH (A)	BRISTLE DIAMETER (B)	OVERALL LENGTH (C)	SHANK DIAMETER (D)	MAXIMUM RPM
20mm	1, 2, 3mm	60mm	3mm	14,000/min

### Long Stem

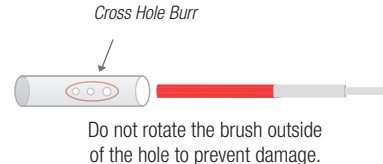
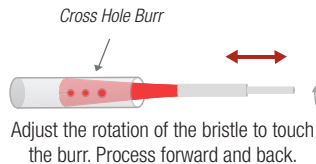
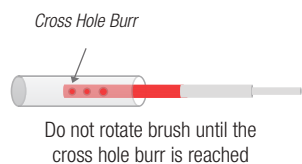
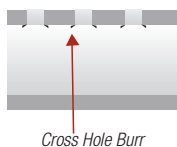
Excellent for cross-hole deburring. Removes burrs on both the side and bottom of the radius in a cross-hole.



Aluminum pipe using 1,000 grit/5mm diameter Cristone® Bristle Brush at 11,000 RPM

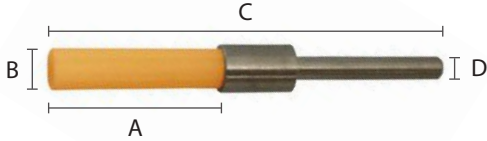
BRUSH LENGTH (A)	BRISTLE DIAMETER (B)	OVERALL LENGTH (C)	SHANK DIAMETER (D)	MAXIMUM RPM
50mm	3, 5, 7mm	120mm	3, 6mm	14,000/min

### Processing Attention (Cross Hole Brush)



## End Brush

Excellent for aggressive finishing and tool mark removal.

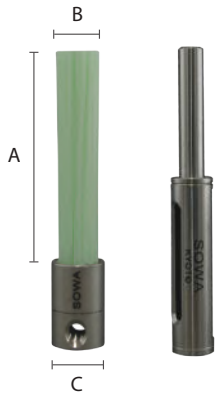


BRUSH LENGTH (A)	BRISTLE DIAMETER (B)	OVERALL LENGTH (C)	SHANK DIAMETER (D)	MAXIMUM RPM
20mm	5mm	49mm	3mm	8,000/min



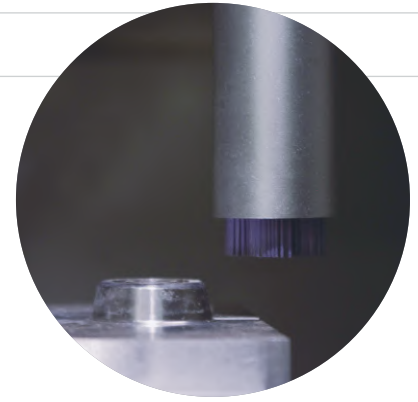
## Cup Brush and Holder

Optimal Performance for surface finishing, fine polishing of precision parts and uneven edges.



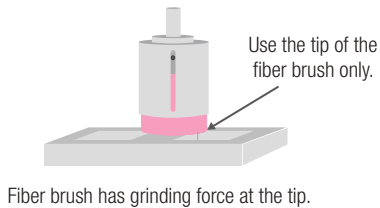
- Fiber brush wears away with use, becoming less flexible resulting in higher grinding force.
- Adjust bristle length with holder in order to achieve flexibility.

BRUSH LENGTH (A)	BRISTLE DIAMETER (B)	SHANK DIAMETER (C)	MAXIMUM RPM
30, 50, 75mm	6, 15, 25, 40, 60, 100mm	6, 8, 9, 12, 13, 17mm	12,000/min



Mount the brush tool on the machine and use within the RPM limit.

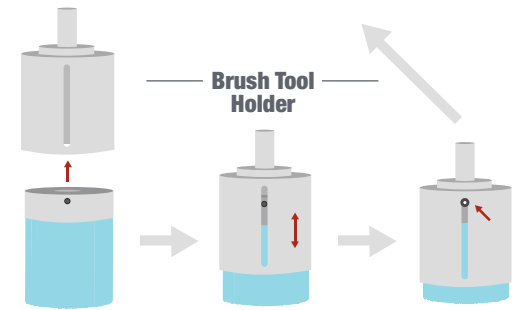
### Fiber Brush Tool Point of Contact



Fiber brush has grinding force at the tip.



Fiber brush does not have grinding force at the side.



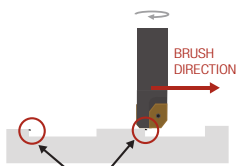
Cristone Bristle Holder

Adjust holder up or down to control the flexibility of fiber brush.

Set holder height by gradually tightening the two bolts into the slot. Do not loosen the hexagon bolt on the bottom of the holder.

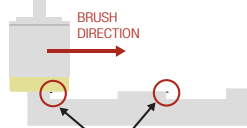
### Removing Burr After Face Mill Process

After the precision machining process, the burrs will occur on the edge of the part.



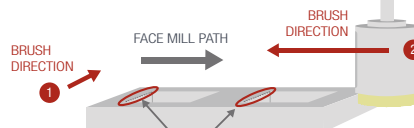
The burr returns inside.

After brushing in one direction, the burrs will occur on edge of part.



The burr returns inside.

Remove burrs by reversing the brush direction opposite of cutting tool. Rotate fiber brushes in one direction ① or ② which will directly face the burrs.



The burr returns inside.

### Available Grit Sizes

GRIT	150	200	400	600	800	1000	1200
COLOR	Green	Pink	Violet	Orange	Blue	White	Red

# Contact Tanis Brush today for your brush solutions from the brush experts.

Known for our vast selection of brush products, resourceful custom-design capabilities and exceptional customer service, Tanis Brush is an industry leader in brush manufacturing.

Since 1987, our team has remained committed to providing our customers with total customer satisfaction throughout the entire customer buying experience.

Our **ISO 9001:2008** and **ISO 13485:2003** certifications bring excellence into our daily work environment and encourages us to persistently question and improve our processes, fostering a culture of quality and continuous improvement.



Always use appropriate eye, face, hand and body protection when using a brush.  
Do not operate brushes above the maximum RPM speeds.  
Bristles will break if rotated outside of cross holes.  
Use of the bristles may generate dust or powder. The use of a dust collector is recommended.  
Clean all equipment after use.



**Engineering | Innovation | Customer Care**

**Customer Service (800) 234-7002 | Ph (262) 646-9000 | Fx (262) 646-9005 | Email [sales@tanisinc.com](mailto:sales@tanisinc.com)**

3660 Kettle Court East • Delafield, WI 53018 • USA

**[tanisbrush.com](http://tanisbrush.com)**

